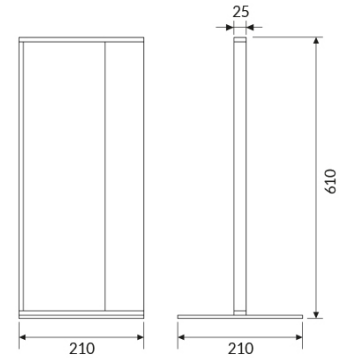
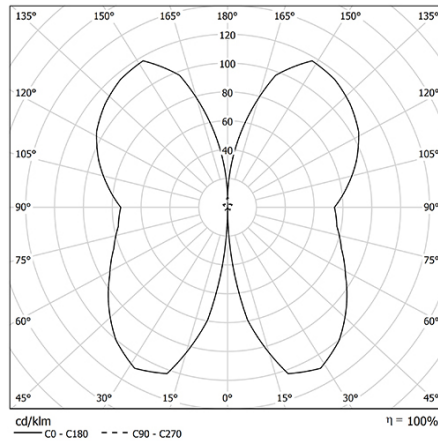


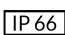



SCOUT

An architectural element for the outdoor world. LGP (Light Guide Panel) diffuser in backlight plexiglass. UGR <22



| CODE |  | FLUX | SIZE | CERTIFICATIONS |
|-----------|---|-------|-------|---|
| 91PC9L366 | 9W 3000K | 180lm | 600mm |    |

Optic

LGP (Light Guide Panel) diffuser in backlight plexiglass with microncisions.

Specifications

CRI>90

McAdams 3

Life Time: L80/B10 >50.000h

5 years complete warranty

Eye safety: risk-free (RG 0) in accordance with EN62471:2009

Body

Manufactured from pressure die-cast aluminum with epoxy powder coating.

Legal references

In compliance with the safety standards EN 60 598-1 and UNI EN 12464-1 (lighting for working places).

Wiring

RE: Built-in wiring 230-240V/50-60Hz with power factor >0.97.